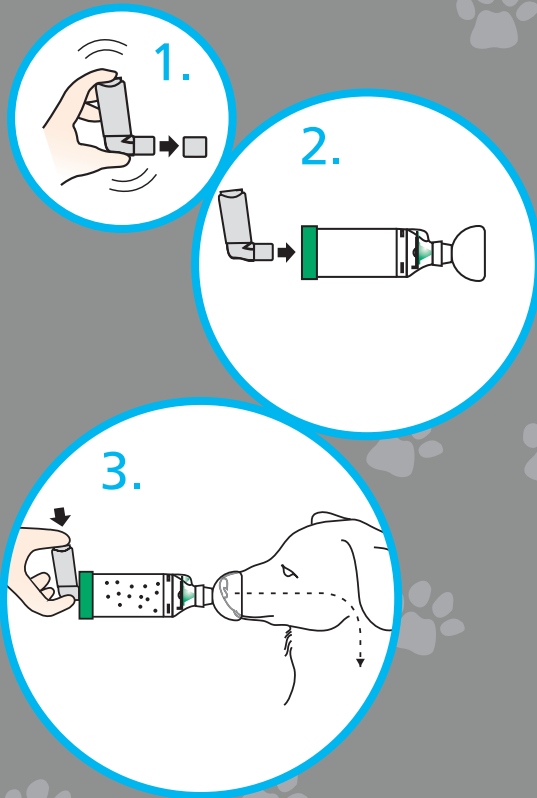


## Instructions for Use

1. Remove cap and shake inhaler
2. Insert inhaler into back of chamber and gently apply the mask to your dog's face
3. Press the inhaler to release the medication when the **Flow-Vu\*** Inhalation Indicator is moving toward your dog and hold the mask in place for 5–6 breaths



## Tips and tricks

Here are some tips and tricks from some other **AeroDawg\*** Chamber users.

- ▶ Reward your dog with treats before and/or after treatment
- ▶ Swaddle your dog in a towel or blanket
- ▶ Slowly introduce the **AeroDawg\*** Chamber. Start with the mask only, getting your dog used to the feel of it
- ▶ Use the **Flow-Vu\*** Inhalation Indicator to help ensure your dog has inhaled their medication
- ▶ Reference the numerous videos on YouTube
- ▶ Be patient — don't give up!



725 Third Street, London,  
Ontario, Canada, N5V 5G4  
+1-519-455-7060 F: +1-519-455-7858  
1-800-465-3296

[www.aerodawg.com](http://www.aerodawg.com)

# Does your dog suffer from respiratory symptoms?



101607-001 Rev. C \* trade-mark and registered trade-name of Trudell Medical International. © TMI 2015. All rights reserved.





## Chronic bronchitis is one of the most common respiratory diseases in dogs

Chronic bronchitis in dogs is caused by inflammation of the airways, resulting in chronic cough and exercise intolerance. Common signs of chronic bronchitis include daily coughing, gagging or swallowing after the cough, difficulty breathing or wheezing for a duration of 2-3 months or longer.

## Treatment

The **AeroDawg\*** Canine Aerosol Chamber is designed to deliver Metered Dose Inhaler medication as recommended by a veterinarian to dogs with chronic bronchitis, laryngeal paralysis or tracheal collapse.

When the **AeroDawg\*** Chamber is used with the inhaler it allows your dog to breathe normally and inhale the medication into their lungs, where it is needed.

Can be used with all types of Metered Dose Inhalers

"I got the **AeroDawg\*** as a last effort before putting my five year old dog down. I didn't know if it would work, but I was willing to try it just to keep her a little longer. She can breathe again, and I just wanted to thank you for making this product. If we don't remember to give her the **AeroDawg\*** she will go sit under the shelf where we keep it until she gets it. Thanks from my dog Penelope and me!"

Hannah, Dog Owner

**AeroDawg\*** 

Canine Aerosol Chamber



### Flow-Vu\* Inhalation Indicator

Takes the guesswork out of administering your dog's inhaler medication. The **Flow-Vu\*** Inhalation Indicator moves toward your dog as they inhale and will only move if there is a good seal.



### Inhalation Valve

Extra sensitive, low resistance valve is designed to respond to shallow, low volume breaths

### Anti-Static Chamber

Holds the medication allowing your dog time to inhale

### 2 Mask Sizes

Each device is shipped with 2 different sized facemasks. The masks are specifically designed to reduce irritation to your dog's fur.

